

# Evidence of Performance

Testing the joint characteristics of a sealing system between window and building structure in new condition, and after simulated short-term exposures



## Test Report

No. 16-000527-PR02

(PB 1-E03-020310-en-01)

Client	MOLL bauökologische Produkte GmbH Rheintalstr. 35-43 68723 Schwetzingen Germany
Product	Sealing system between window and building structure
Designation	Internal seal : Joint sealing film CONTEGA SOLIDO SL ① External seal : Joint sealing film CONTEGA SOLIDO EXO ②
Installation position / Boundary conditions	Hollow block wall with square reveal Timber window IV68, installed in centre of wall reveal Fixing to building structure on sides using frame anchors without plugs. Fasteners spaced on sides $\leq 700$ mm. Dead load is transmitted by setting blocks at bottom. Securing position on sides by frame anchors without plugs. External and internal seals provided by joint sealing films. No joint filling provided. Processing as specified by client.
Scope	Airtight internal and watertight external joints between external wall and window and/or casement doors made of timber, of equivalent design, as described above.
Special features	-/-

## Results

Air permeability at up to  $\pm 1000$  Pa in new conditions  
 $a < 0.1 \text{ m}^3/[\text{m h (daPa)}^{2/3}]$

Watertightness at up to 600 Pa in new conditions  
**no water penetration**

Air permeability at up to  $\pm 1000$  Pa after simulated short-term exposures (temperature, wind, operation )  
 $a < 0.1 \text{ m}^3/[\text{m h (daPa)}^{2/3}]$

Watertightness at up to 600 Pa after simulated short-term exposures (temperature, wind)  
**no water penetration**



ift Rosenheim  
17.08.2016

Thomas Stefan, Dipl.-Ing. (FH)  
Head of Testing Department  
Construction Product Testing

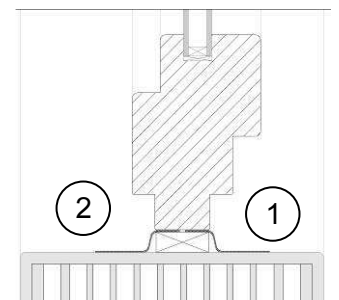
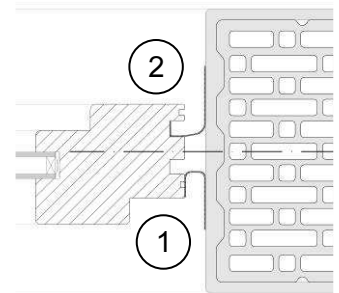
Thomas Krichbaumer  
operating testing officer  
Construction Product Testing

## Basis:

ift- Guideline MO-01/1 : 2007-01  
Wall connection of windows,  
Part 1: Determination of the suitability of use of sealing systems,  
Clause 5, Testing joint characteristics

Test report 16-000527-PR02 (PB 1-E03-020310-de-01) dated 24.06.2016

## Representation



## Instructions for use

This test report serves to demonstrate the above characteristics

## Validity

The data and results given refer solely to the tested and described specimen.

## Notes on publication

The ift-Guidance Sheet "Advertising with ift test documents" applies. The cover sheet can be used as an abstract.

## Contents

The report contains a total of 26 pages.